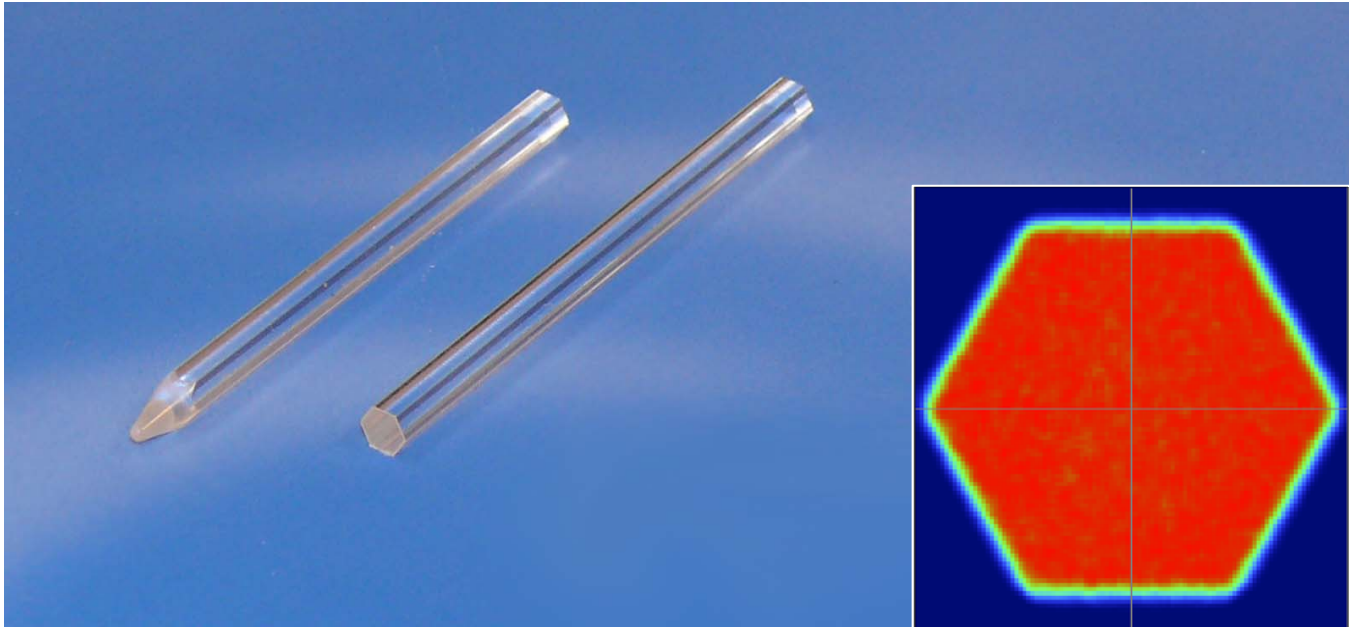


SCHOTT® Illumination Homogenizer

Glass clad hexagonal mixing rods provide uniform LED and laser light illumination.



Performance Characteristics

Optical clad material enables simple installation and mounting

Improved transmission over polymers in the visible spectrum

Operational temperatures up to 350°C

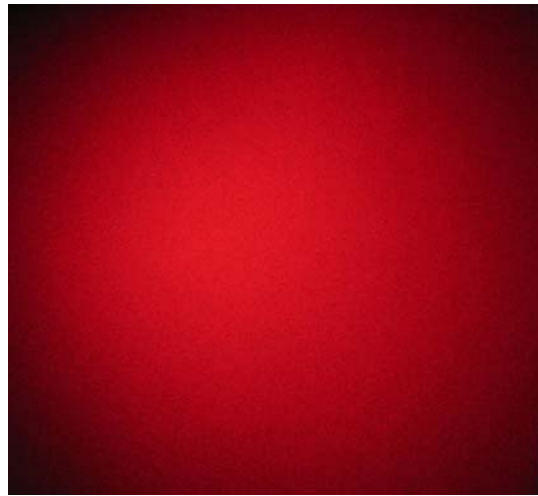
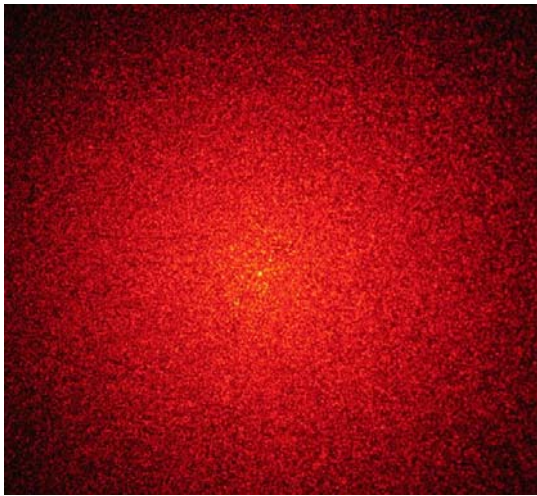
Geometry optimized for uniform intensity distribution

Improved speckle noise

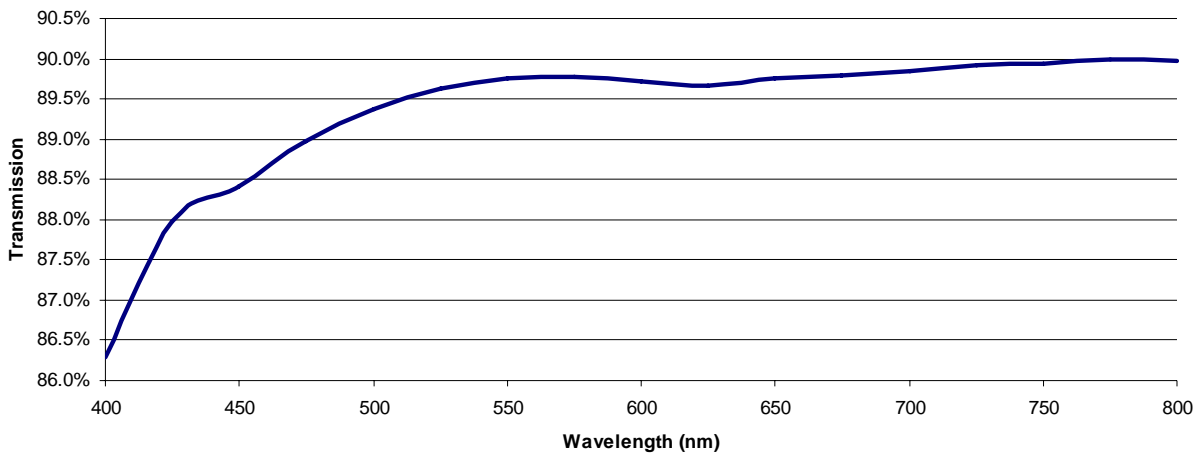
Customized input geometry to match launch conditions

System matched numerical apertures available

Custom sizes available



Reference transmission of 2" long clad mixing rod
(material 75C, NA 0.58, 3.4mm hex)



Product Specifications

Numerical Aperture: 0.14, 0.28, 0.35, up to 1.0

Diameters up to 10mm available

Material optical characteristics enable mixing from 340 – 1800nm

Length to diameter aspect ratio of mixing rod, 20:1 typical, for uniform mixing

Sample Applications

Medical imaging systems

Laser targeting

Industrial inspection systems

RGB projection systems

Medical sensors and detectors

For more information please contact

Lighting and Imaging
SCHOTT North America, Inc.
 122 Charlton Street
 Southbridge, MA 01550

Phone: (508) 765 - 9744
 Fax: (508) 765 - 1299
lightingimaging@us.schott.com
www.us.schott.com/lightingimaging

All specifications are subject to change without prior notice. This datasheet or any extracts thereof may only be used in other publications with express permission of SCHOTT.

© SCHOTT North America, Inc.

SCHOTT
 glass made of ideas