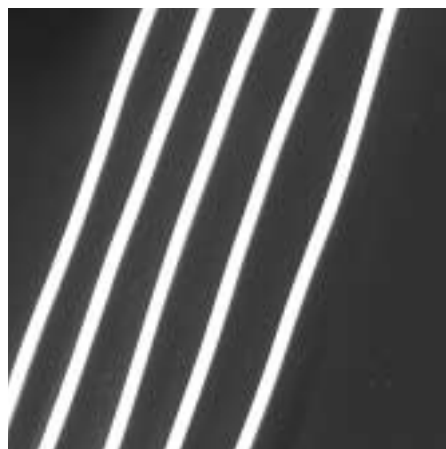


SpectraLine glass harnesses

Glass side emitting effect harnesses

- Each tail is only 5 mm diameter
- Electrically safe
- Highly flexible, small bend radius
- Both functional and decorative applications
- Ideal for accentuating forms and contours
- Can be used in high and low temperature conditions



ORDERING INFORMATION

Subject to certain guidelines we can produce harnesses to your requirements. A harness can contain different tail lengths. Within a harness, lengths can be specified in 100 mm steps up to 15 m.

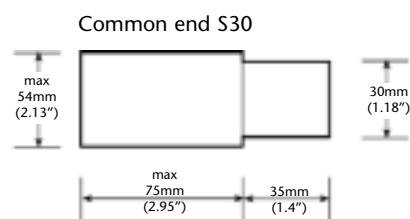
Mixed tails (ie SpectraFlex, SpectraStream, SpectraLine, etc) of different sizes can be included in a harness. Special harnesses are available upon request.

When ordering please note the maximum number of tails possible in a harness and the maximum tail length.

Specification

SpectraLine glass side emitting fiber optic harnesses

	Units	SpectraLine Glass harness
Fiber bundle diameter	mm (in)	3.0 (0.12)
Outer sheath diameter	mm (in)	5.0 (0.2)
Minimum bending radius	mm (in)	20 (0.79)
Max number of tails		52
Max recommended length	meters (feet)	7 (23)
Common end		S30
Sheath		Clear PVC
Operating temperature	°C (°F)	-20 ... +80 (+4 ... +176)



Accessories

Mounting channel



Clear double mounting channel for SpectraLine Glass side emitting plastic harnesses, UV stable. Supplied in 6.56' (2m) lengths.
For 5mm (0.2") dia cable, without cover

Single channel
Twin channel

1017676
60046808

SCHOTT
glass made of ideas

Should you require further information please
contact your local SCHOTT distributor.

Fiber Optics

SCHOTT North America, Inc.

122 Charlton Street

Southbridge

MA 01550 USA

Tel: +1 508 765 3235

Fax: +1 508 764 7361

E-mail: LSOinfo@us.schott.com

www.us.schott.com/fiberoptics

In a continuing effort to offer the best product
possible, we reserve the right to change, without
notice, specifications or materials that in our
opinion will not alter the function of the product.

SCHOTT
glass made of ideas