

NEW!
With light feedback
feature, twice the intensity
and Ethernet connectivity!

SCHOTT LLS – LED Light Source

Longer Life, Lower Energy Consumption, Higher Performance

The SCHOTT LLS offers several advantages over other types of fiber optic light sources used in machine vision applications, including:

- Long life-time (up to 50,000 hours)
- Fits all COLDVision light guides
- Fast triggered strobe capabilities (maximum 1 kHz pulse rate, maximum pulse width 1msec, duty 1/10)
- Internal light feedback provides stabilized light output for the most demanding machine vision applications
- Low power consumption (less than 25 watts)
- Improved immunity to vibration and shock
- Small footprint and worldwide universally compatible power supply with interchangeable plugs
- RoHS compliant
- CE Approved



Characteristics

Dimensions	Length 197 mm (7.75 in) Width 129 mm (5.08 in) Height 63 mm (2.48 in)
Weight	862 grams (1.9 lbs)
Operating Temperature	5° C (41° F) to 40° C (104° F)
Color Temperature - White	6000 K

SCHOTT LLS Technical Information

Part Number	Color	Wavelength (nm) (bandwidth +/- 20 nm)	Light Output*
A20960	Red	625	120 lm
A20960.1	White	-	275 lm
A20960.2	Green	525	100 lm
A20960.4	Blue	470	40 lm
A20955	Mounting Bracket		

*Light output specifications are measured with a 1 m long, 13 mm diameter bundle (A08051.40 bundle).
The light output specification is typical output and actual output may vary.

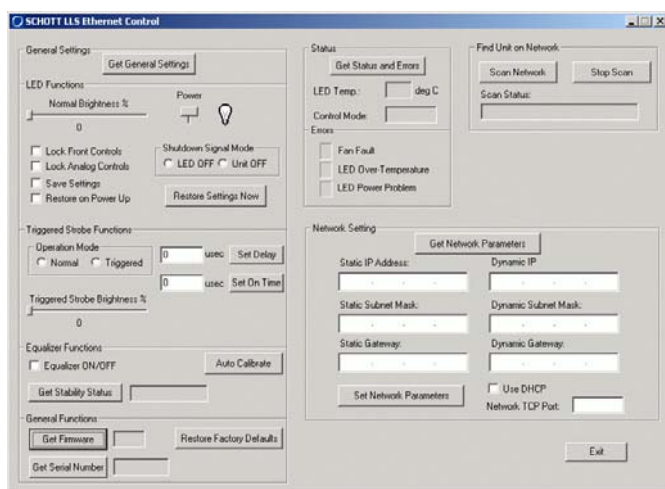
Hybrid Solution pairs LEDs with Fiber Optics

The LLS offers users 4 different modes of control interfaces – a continuous intensity control knob, Ethernet, RS-232 or analog 0-5 Volt.

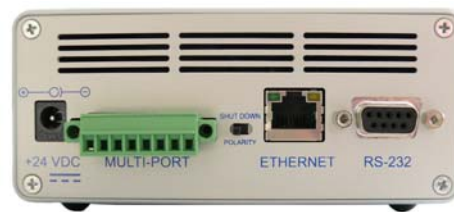
The auto-sensing inputs eliminate the need to switch manually between the modes. The unit also features a user control lock-out via the Ethernet and RS-232 SCHOTT supplied software.



Part number A20960



Screen shot of the supplied Ethernet software



Rear View shows (from left to right): universal power input, multi-port input, Ethernet input, RS-232 input

For more information please contact:

Fiber Optics
SCHOTT North America, Inc.
122 Charlton Street
Southbridge, MA 01550-1960

Phone: (508) 765-9744
Fax: (508) 764-6273
E-mail: fiberoptics.southbridge@us.schott.com
www.us.schott.com/fiberoptics

SCHOTT
glass made of ideas