

SCHOTT SpectraBar

LED-Lightbar for high end Retail and Museum lighting

As an alternative to the well accepted Fiber Optic technology, SCHOTT now offers a NEW LED product range which delivers the following benefits:

- High Brightness LEDs with wide viewing angle provide powerful and uniform illumination to displays
- Excellent color temperature to make crystals and jewelry sparkle
- Slim design profile
- Effective thermal management
- Low cost of ownership due to long lifetime and low power consumption
- Wide range of power supplies and accessories available



SpectraBar

SpectraBar Ordering Information (Luminaires are supplied with 1.5m / 5' of interconnecting cable)

Product Code	Color	Length mm / "	Illuminance @ 12" (305 mm)	Power** (W)
1165699	Black	270 / 10.63	103 ftcd / 1108 lux	6.6
1165700	Silver	270 / 10.63	103 ftcd / 1108 lux	6.6
1165701	Black	510 / 20.08	141 ftcd / 1517 lux	13.2
1165702	Silver	510 / 20.08	141 ftcd / 1517 lux	13.2
1165723	Black	750 / 29.53	161 ftcd / 1733 lux	19.8
1165724	Silver	750 / 29.53	161 ftcd / 1733 lux	19.8
1165725	Black	990 / 38.98	166 ftcd / 1733 lux	26.4
1165726	Silver	990 / 38.98	166 ftcd / 1733 lux	26.4
1165727	Black	1230 / 48.43	166 ftcd / 1786 lux	33.0
1165728	Silver	1230 / 48.43	166 ftcd / 1786 lux	33.0
1165729	Black	1470 / 57.87	166 ftcd / 1786 lux	39.6
1165730	Silver	1470 / 57.87	166 ftcd / 1786 lux	39.6

* Measured normal to luminaire @ LED case temperature Tc=50 °C / 122 °F; may vary by ±10%

** Batch to batch variation in LED specification may change power by ±15%



Swarovski - Bayshore Mall, Glendale, WI

Additional Information

CCT (K): 4400 ± 200

(Color Temperature, measured for LED case temperature $T_c = 50^\circ \text{C} / 122^\circ \text{F}$)

CRI: 85 (Color Rendering Index, ± 5)

Lifetime: 50.000 hrs (when used in accordance with published guidelines)

Full Viewing Angle: 100°

Operating Range: $-40^\circ \text{F} \dots +105^\circ \text{F}$

Accessories

Range of power supplies (25W ... 150W); CE and UL approved

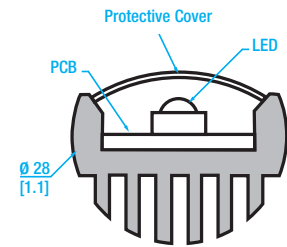
Frosted protective cover (transmissivity 75%)

Mounting posts for easy installation

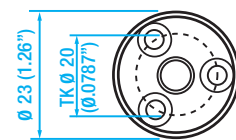
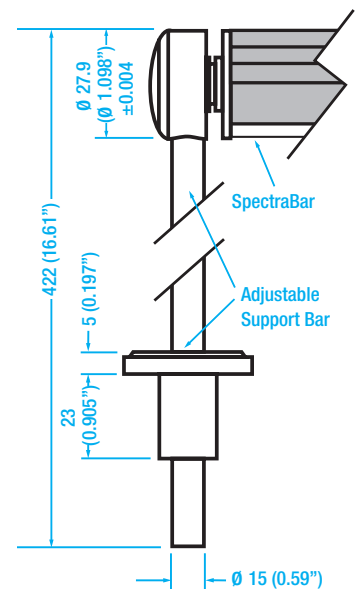
For more information please contact:

Fiber Optics
SCHOTT North America, Inc.
122 Charlton Street
Southbridge, MA 01550
USA

Phone: 508-765-3235
Fax: 508-764-7361
lsoinfo@us.schott.com
www.us.schott.com/fiberoptics



SpectraBar cross section (mm) / inches



SpectraBar cross section mm / (inches)

In a continuing effort to offer the best product possible, SCHOTT reserves the right to change, without notice, specifications or materials that – in SCHOTT's opinion – will not alter the function of the product.

SCHOTT
glass made of ideas