

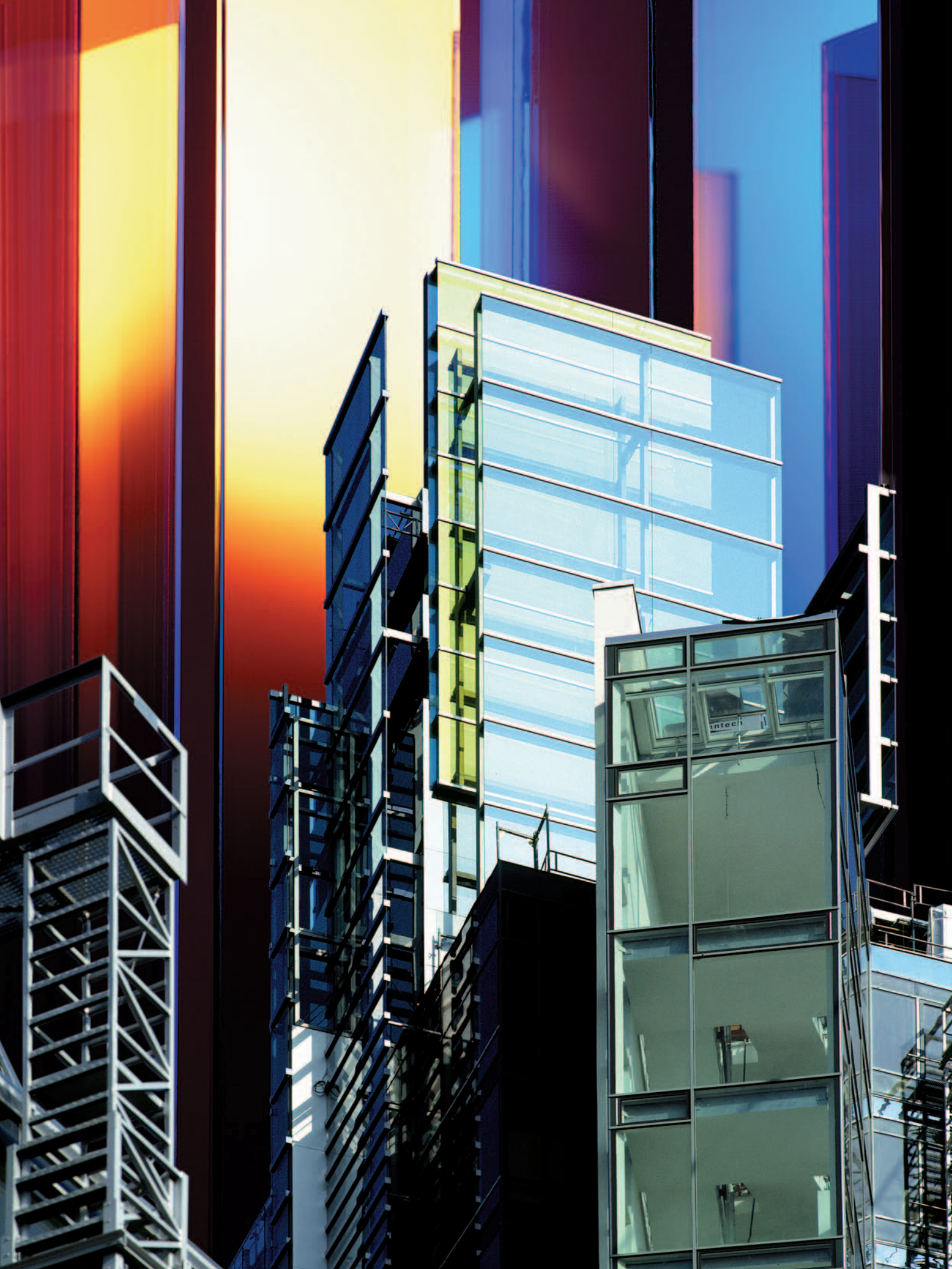
NARIMA™

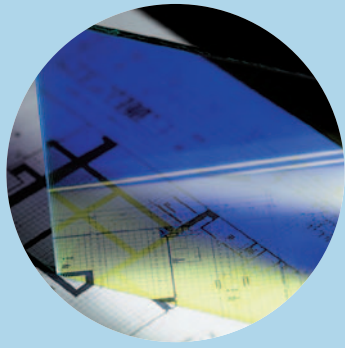
The living glass



Variable color effects
thanks to the dichroic glass
from SCHOTT

SCHOTT
glass made of ideas





A single glass produces 1000 different color nuances depending on the viewing position, incident light and the background.

(here: Color effect glass blue/gold)

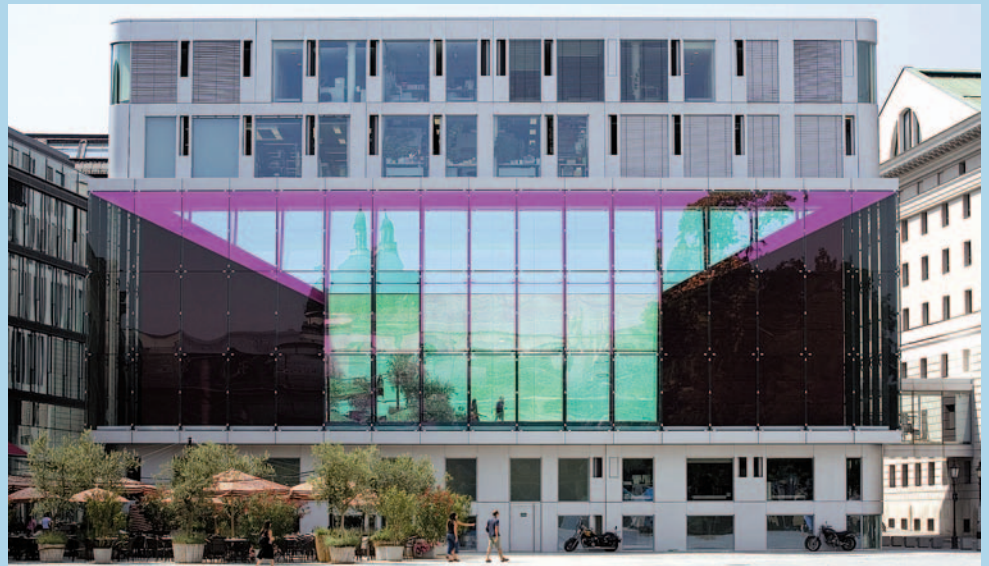
NARIMA™ – THE LIVING GLASS

This dichroic color effect glass from SCHOTT produces dazzling variable color effects with spectacular depth effects depending on the position, reflection and transmittance.

Extremely thin layers are applied to the glass using the SOL-GEL dipping process. The coated glass subsequently consists of multiple optical interference layers that account for the various intentional color effects.

The predominantly oxidic layers are hard and highly resistant to both scratches and chemicals.

A combination of highly refractive and low-refractive layers results in a rainbow effect. Different colors result depending on incident solar radiation, the viewing angle and the background.



The rehearsal building used by the Bavarian State Opera at Marstallplatz in Munich, Germany
Photo: Michael Heinrich, Munich

Color effect glass	Color code	Visual color impression of the coating	
		in reflection (color changeover)	in transmittance
Color effect glass blue/gold	4160 0	blue - gold*	blue
Color effect glass blue/green	4160 2	green - gold*	blue-green
Color effect glass green	4160 5	reddish - silver - gold*	green

Nominal thickness in mm	Dimensions in mm x mm (length x width)
upon request	3,770 x 1,770
upon request	3,180 x 1,770

Base glass: float glass
White glass (extra clear low-iron float glass) available upon request.

*The color of the reflection is dependent on the viewing angle.

Additional color effects with respective transmittance and reflections are available upon request.

SCHOTT North America, Inc

555 Taxter Road
Elmsford, NY 10523

Phone: +1 (914)831-2200
Fax: +1 (914)831-2201
info@us.schott.com
www.us.schott.com/architecture

SCHOTT
glass made of ideas