

D 263® LA Thin Glass

Product Information

D 263® LA eco thin glass (LA = low alpha) is a colorless borosilicate glass. It is the only low-alpha radiation sheet glass available in the market today and is produced by a SCHOTT specific down-draw method.

Using the purest raw materials and select tank materials ensure the very low alpha radiation for D 263® LA eco thin glass.

It is available in sheet form in different thicknesses between 0.145 mm and 1.3 mm.

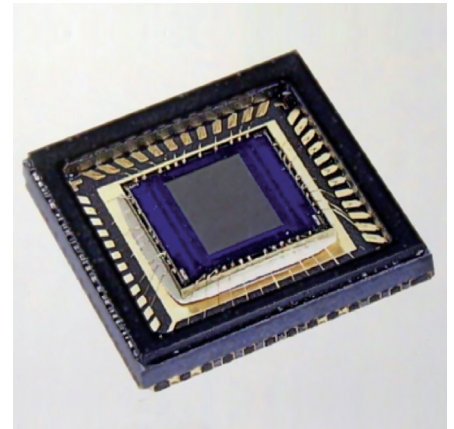
D 263® LA eco thin glass is manufactured with eco-friendly refining agents.

Applications

Packaging of radiation-sensitive sensors such as e.g. CCD image sensors.

Features

- Low alpha radiation
- High luminous transmittance
- Coefficient of thermal expansion matching to ceramic
- Low surface roughness due to fire-polished surface
- Sheet glass sizes enable flexible wafer sizes
- Tight thickness control
- Easy to cut using the scribe and break method



Technical Data

Dimensions	Square and round custom sizes
Thicknesses	between 0.145 mm and 1.3 mm
Luminous transmittance τ_{vD65} (d = 1.1 mm)	91.7%
Coefficient of mean linear thermal expansion α (20 °C; 300 °C) (static measurement)	$7.2 \times 10^{-6} \text{ K}^{-1}$
Transformation temperature Tg	557 °C
Dielectric constant ϵ_r at 1 MHz	6.7
Refractive index n_D	1.5230
Density ρ (annealed at 40 °C/h)	2.51 g/cm ³
Intensity of α -radiation	< 0.0030 counts (h x cm ²)



Advanced Optics
 SCHOTT North America, Inc.
 400 York Avenue
 Duryea, PA 18642
 USA
 Phone +1 570/457-7485
 Fax +1 570/457-7330
 info.optics@us.schott.com

www.us.schott.com/advanced_optics

SCHOTT
 glass made of ideas