

# D 263® LA Thin Glass

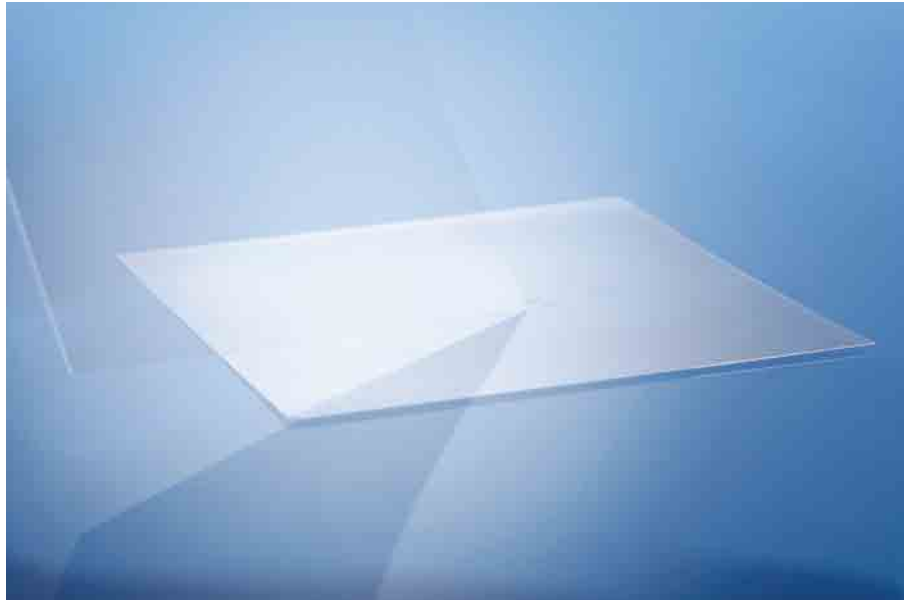
## Product Information

D 263® LA eco thin glass (LA = low alpha) is a colorless borosilicate glass. It is the only low-alpha radiation sheet glass available in the market today and is produced by a SCHOTT specific down-draw method.

The usage of the purest raw materials and selected tank materials ensure the very low alpha radiation for D 263® LA eco thin glass.

It is available as sheet glass in thicknesses ranging from 0.1 mm to 1.1 mm.

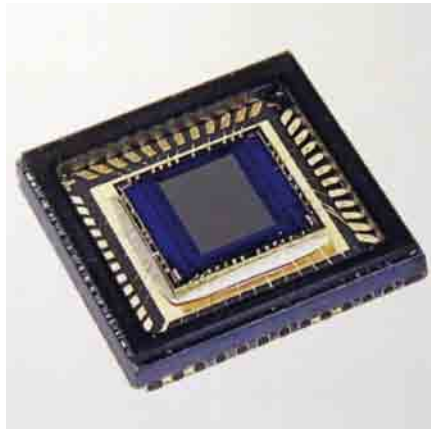
D 263® LA eco thin glass is manufactured with eco-friendly refining agents.



## Applications

### CCD image sensor packaging

- Low alpha radiation
- High luminous transmittance
- Coefficient of thermal expansion match to ceramic
- Low roughness due to fire-polished surface
- Sheet glass sizes enable 8-inch to 12-inch wafers
- Tight thickness control
- Easy to cut using the scribe and break method



## Technical Data

Dimensions	Square and round custom sizes
Thicknesses	0.1 mm up to 1.1 mm
Luminous transmittance $\tau_{vD65}$ (d = 1.1 mm)	91.7%
Coefficient of mean linear thermal expansion $\alpha$ (20 °C; 300 °C) (static measurement)	$7.2 \cdot 10^{-6} \text{ K}^{-1}$
Transformation temperature $T_g$	557 °C
Dielectric constant $\epsilon_r$ at 1 MHz	6.7
Refractive index $n_D$	1.5230
Density $\rho$ (annealed at 40 °C/h)	2.51 g/cm <sup>3</sup>
Intensity of $\alpha$ -radiation	< 0.0050 counts (h · cm <sup>2</sup> )



Advanced Optics  
 SCHOTT North America, Inc.  
 400 York Avenue  
 Duryea, PA 18642  
 USA  
 Phone +1 570/457-7485  
 Fax +1 570/457-7330  
 info.optics@us.schott.com

[www.us.schott.com/advanced\\_optics](http://www.us.schott.com/advanced_optics)

**SCHOTT**  
 glass made of ideas