

# SCHOTT NARIMA® – Color Effects Glass

Enchanting, eye-catching and elegant

**Base material:** Float glass (clear)

**Processing options:** Laminated glass / thermally toughened safety glass / heat strengthened glass / insulating glass / insulating glass with sun protection and sound insulation

NARIMA® is a Color Effects Glass that is produced in a dipcoating process. Very thin layers of high and low refraction metal oxide coatings create vivid colors which change depending upon viewing angle and daylight conditions. Based on its hardness, scratch resistance and high chemical resistance, NARIMA® is noticeably more durable than conventionally coated glasses – and care and cleaning of the glass could hardly be more simple and uncomplicated.

## Product advantages

- Vivaciousness – impressive color effects (in Blue/Gold, Blue/Green, Green, May green, Yellow and Orange)
- Uniqueness in effect, dimensions and processing options – eye catching interior and exterior applications
- Elegance – interesting visual accents with impressive depth effects and homogeneous appearance (especially in comparison to film-based solutions)
- Durable – hard, scratch and chemical resistance
- Multiple processing options – as safety and insulating glass
- Dip-coated glass – harder than spray coated glass products and less susceptible to moisture than film based solutions
- Applicability – office buildings, museums, and opera houses, doors and balustrades

## Applications

### Façades

- Monolithic installation creates dynamic color effects in buildings
- Single laminates for slat applications are now possible
- Insulating glass applications

### Interior architecture

- Aesthetic options for interior architecture
- Balustrades
- Doors
- Dividing walls
- Glass art
- Design solution for lighting

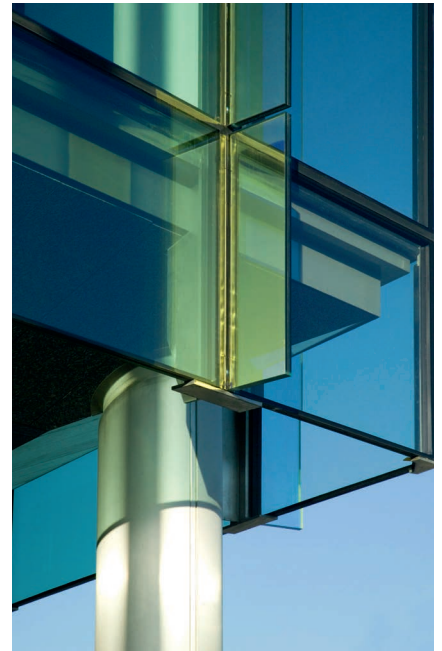
## Product range

Color Effects Glass	Color Effects Glass	Color changeover of the coating (reflection)	Color appearance (transmission)
Blue/Gold***	27110	gold*	blue
Blue/Green**	23200	violet*	blue-green
Green***	23310	violet*	light-green
May green**	23400	violet*	green
Yellow***	24210	blue*	yellow
Orange***	24310	blue – silver*	orange

\*The color of the reflection depends on the observation angle.

\*\* Only available as non-toughened glass.

\*\*\* Can be thermally toughened.



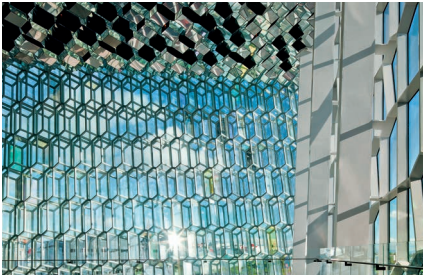
NARIMA® Color Effects Glass is available in standard thicknesses of 6 mm with a float glass base. It is also available using extra clear low-iron float glass and RIVULETTA® structured glass on request. 4 mm, 5 mm, 6 mm, 8 mm, 10 mm and 12 mm thickness also available on request.

Standard sheet dimensions (net) (min.) are: 3,770 mm x 1,700 mm, 3,180 mm x 1,700 mm and 1,700 mm x 1,220 mm

**SCHOTT**  
glass made of ideas

# SCHOTT NARIMA® – Color Effects Glass

Enchanting, eye-catching and elegant



**Project:** HARPA Concert Hall and Conference Centre

**Location:** Reykjavik, Iceland

**Architect:** Henning Larsen Architects

**Façade:** Olafur Eliasson 2011

The impressive Reykjavik Concert Hall and Conference Centre Harpa reflects the nature of this volcanic island. Its multifaceted glass façade corresponds with the sounds of the sea, city, and sky.

The main idea behind light and transparency is also reflected in his choice of glass. Round about 1,000 glass blocks were designed using NARIMA® Color Effects Glass that reflects the changing light conditions during the day. The façade as a kaleidoscope of colors – made possible by the optical interference layers of this dichroic color effect glass.

The spectrum ranges from the warm golden colors of glowing lava to the ice blue glaciers of winter. And at night, the façade glows in red, green and blue, thanks to how the glass blocks are illuminated by LEDs that can be controlled individually.

**Project:** Department store Printemps

**Location:** Paris, France

**Architect:** Gabor Mester de Parajd

2013

The luxury department store Printemps Hausmann is one of the main sight-seeing stops for Parisian tourists along with the Eiffel Tower, the Louvre museum and Notre Dame.

Renovations were recently completed, and, according to the principle of its founder, the store was revealed fresher than ever in the spring of 2013. This project was realized with the help of several companies, including SCHOTT France for the glass façade. The façade of the seven-floor men's store was renovated and is an Art Deco masterpiece. This architectural style is characterized by lavish ornamentation and a love of luxurious materials such as bronze or glass.

During the renovation, 12,000 pieces of SCHOTT NARIMA® Color Effects façade glass in gold-blue were used, which created a luxurious mosaic.

**Project:** Remembrance Plaza Memorial, Lynn University

**Location:** Florida, USA

**Architect:** Sousa Architecture Inc.

2012

They wanted to help and ended up as victims of a natural disaster: 2 professors and 12 students from Lynn University in the US lost their lives during an earthquake in Haiti in 2010.

A place of remembrance was to be created. When it came to realizing this idea, the architects decided in favor of the color effects glass NARIMA® in the basic colors blue-green and blue-gold.

Each of the prisms consists of three 1.20 m x 2.40 m special glass panes for the sides and an equilateral triangle 1.20 m in size for the top side. 63 m<sup>2</sup> of glass were installed in total as triple glass laminates made of two colored NARIMA® panels and two panes of thermally tempered white glass that surround it on both sides.

Advanced Optics  
SCHOTT North America, Inc.  
555 Taxter Road  
Elmsford, NY 10523  
USA  
Phone +1 (914) 831-2240  
Fax +1 (914) 831-2346  
info.architecture@us.schott.com

[www.us.schott.com/architecture](http://www.us.schott.com/architecture)

**SCHOTT**  
glass made of ideas