

# Gooseneck Light Guides



Gooseneck light guide



Gooseneck light guide bifurcated



Combi light guide bifurcated

## Features

- Flex and stay light guides.
- Part No. 170.402 with additional 800 mm flexible arm
- Black lacquered semi-rigid gooseneck tubing.
- Focusing optics with color filter option available.

## Benefits

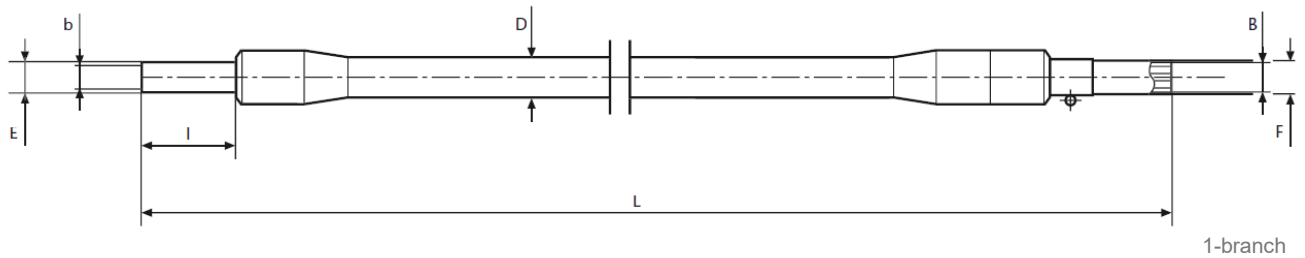
- Precise positioning offers complete control of light placement.
- Gooseneck branches positioned in opposite directions create near shadow-free illumination.
- Re-adjust with ease.
- Dual models illuminate workspace with a single light source.
- Part No. 170.402 can be stationary fixed at the microscope post

| Cold light source  | Part No. | Type                                   | Length  | End tip Ø     | End tip length | Active Ø branch | Active Common end Ø                      | Jacketing material                   | Outer Ø Jacketing                                   | Light source adapter Ø                                |
|--|----------|--|---|---------------|----------------|-----------------|--|--------------------------------------|---|---|
|  |          |  | (L)   | (E)           | (I)            | (b)             | (B)                                      |                                      | (D)   | (F)   |
| KL 300 LED   | 170 101  | 1 branch                               | 500 mm<br>19.69"  | 6 mm<br>0.24" | 20 mm<br>0.79" | 3.5 mm<br>0.14" | 5 mm<br>0.20"                            | Flex & Stay                          | 11 mm<br>0.43"                                      | 9 mm<br>0.35"   |
|  | 170 202  | 2 branch                               | 500 mm<br>19.69"  | 6 mm<br>0.24" | 20 mm<br>0.79" | 3.5 mm<br>0.14" | 5 mm<br>0.20"                            |                                      | 11 mm<br>0.43"                                      | 9 mm<br>0.35"   |
| KL 1600 LED<br>KL 2500 LED<br>KL 1500 HAL<br>KL 2500 LCD**               | 154 101  | 1 branch                               | 600 mm<br>23.62"  | 6 mm<br>0.24" | 20 mm<br>0.79" | 4.5 mm<br>0.18" | 4.5 mm<br>0.18"                          | Flex & Stay                          | 11 mm<br>0.43"                                      | 10 mm<br>0.39"  |
|  | 154 202  | 2 branch                               | 600 mm<br>23.62"  | 6 mm<br>0.24" | 20 mm<br>0.79" | 4.5 mm<br>0.18" | 6.4 mm<br>0.26"                          |                                      | 11 mm<br>0.43"                                      | 10 mm<br>0.39"  |
|  | 154 302  | 3 branch                               | 600 mm<br>23.62"  | 6 mm<br>0.24" | 20 mm<br>0.79" | 4.5 mm<br>0.18" | 7.8 mm<br>0.31"                          |                                      | 11 mm<br>0.43"                                      | 10 mm<br>0.39"  |
| KL 300 LED<br>KL 1600 LED<br>KL 2500 LED<br>KL 1500 HAL<br>KL 2500 LCD** | 170402   | 2 branch<br><br>plus<br><br>1 flexible | (L)<br>500 mm<br>19.69"<br><br>(L*)<br>800 mm<br>31.50" | 6 mm<br>0.24" | 20 mm<br>0.79" | 4.5 mm<br>0.18" | 6.4 mm<br>0.26"<br><br><b>randomized</b> | Flex & Stay<br><br>plus<br><br>M-PVC | (D)<br>11 mm<br>0.43"<br><br>(D*)<br>14 mm<br>0.55" | 9 mm<br>0.35"<br><br><b>and</b><br><br>10 mm<br>0.39" |

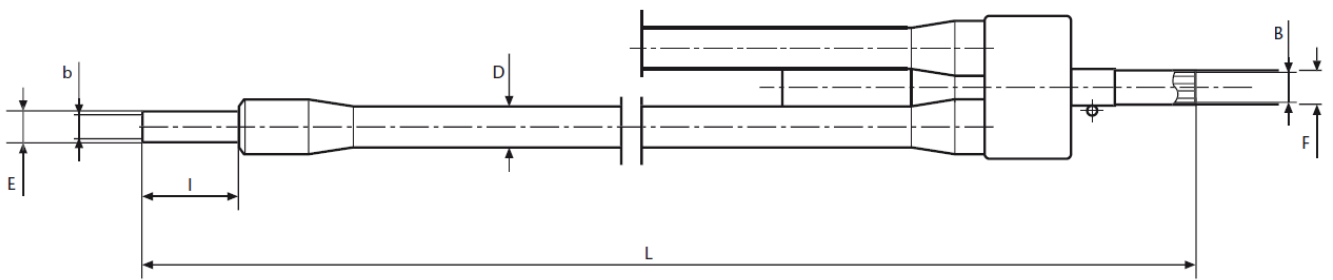
\*\* and discontinued KL 1500 products (KL 1500 compact, KL 1500 LCD, KL 1500 LED, KL 1500 LED Plus)



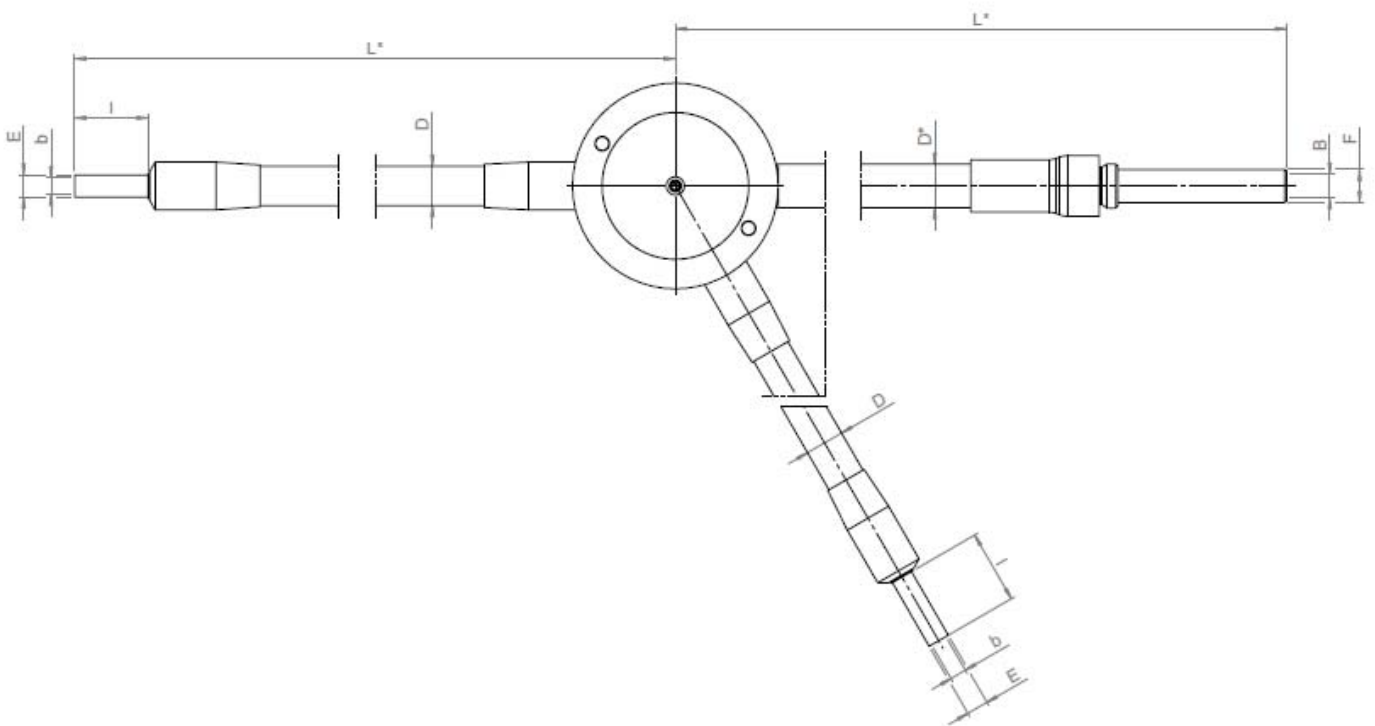
# Gooseneck Light Guides



1-branch



2- and 3-branch



2-branch Combi light guide

All specifications are subject to change without prior notice. This datasheet or any extracts thereof may only be used in other publications with express permission of SCHOTT. © SCHOTT North America, Inc.

SCHOTT North America, Inc.  
**Lighting and Imaging**  
 122 Charlton Street  
 Southbridge, MA 01550 USA  
 phone: +1-508-765-3211  
 fax: +1-508-764-6273  
 lightingimaging@us.schott.com  
 www.us.schott.com/lightingimaging

