

Dual and Quad Bundles

Flexible bundles give the user versatility when routing and positioning light.



Quad Bundle, A08545



Dual Bundle, A08550.72

Bundle Input: Black Anodized Aluminium
 Bundle Sheathing: PVC Covered Metal Tubing

Quad Bundle Specifications

Part No.	Active Input Fiber Diameter	Distal Ferrule Diameter	Tubing Diameter	Bundle Length
A08545	.50" (13)	.393" (10)	.47" (12)	40" (1016)

Dual Bundle Specifications

Part No.	Active Input Fiber Diameter	Distal Ferrule Diameter	Tubing Diameter	Bundle Length
A08530	.30" (8)	.393" (10)	.40" (10)	40"(1016)
A08540	.36" (9)	.393" (10)	.47" (12)	40"(1016)
A08550	.43" (11)	.393" (10)	.47" (12)	40"(1016)
A08550.72	.43" (11)	.393" (10)	.47" (12)	72" (1829)

Product and Performance Characteristics

- Variety of standard sizes and bundle multi-leg configurations with tight bending radius for easy routing
- Multi-leg bundles are illuminated with one light source
- Standard output ferrules accept spot lenses and polarizing caps (See the Accessories section)
- Standard input accepts Dichroic color filters, diffusers and ColdVision Series light sources
- Support products are available in the Support Apparatus section of the product catalog
- Modified standard and custom configurations are available

Matrix for A08530 - A08550.72 Dual Bundles

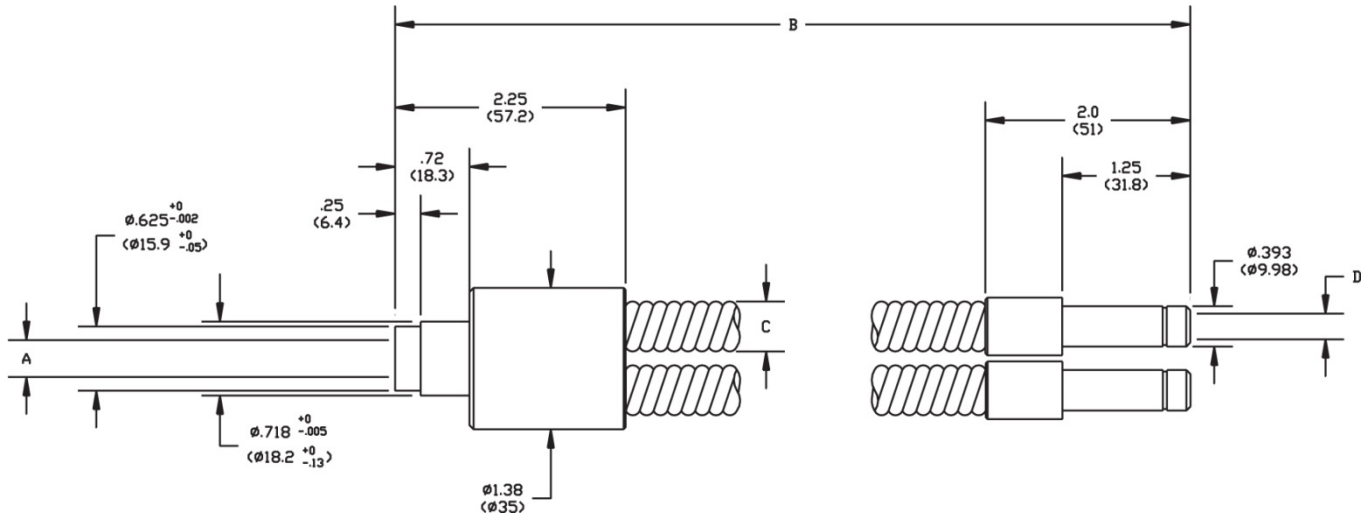
Part No.	A	B	C	Bend Radius	D
A08530	.30" (8)	40"(1016)	.40" (10)	.5" (13)	.21" (5.3)
A08540	.36" (9)	40"(1016)	.47" (12)	.6" (15)	.25" (6.4)
A08550	.43" (11)	40"(1016)	.47" (12)	.6" (15)	.30" (7.6)
A08550.72	.43" (11)	72" (1829)	.47" (12)	.6" (15)	.30" (7.6)

Dimensions in () are in mm

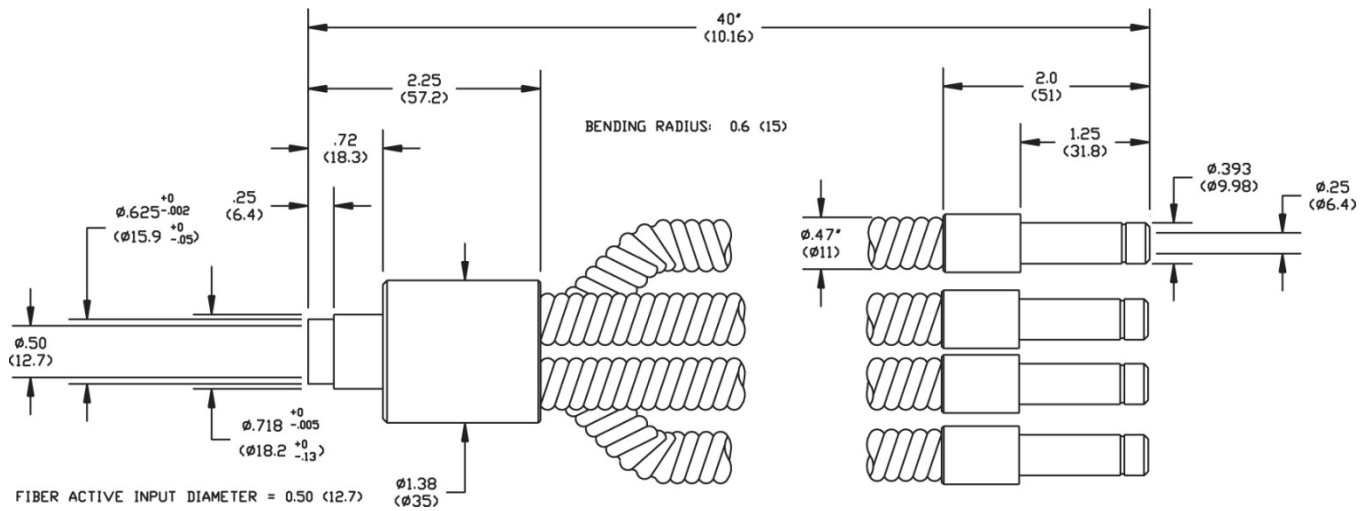
Version 01.2016



Dual and Quad Bundles



Dual Flexible Bundle, A08530 – A08550.72



Quad Flexible Bundle, A08545

Dimensions in () are in mm

Warning : This product is manufactured with glass fiber. Not for use in cable/hose carrier. Call SCHOTT to discuss moving cable/hose carrier applications.

All specifications are subject to change without prior notice. This datasheet or any extracts thereof may only be used in other publications with express permission of SCHOTT. © SCHOTT North America, Inc.

Lighting and Imaging
SCHOTT North America, Inc.
 122 Charlton Street
 Southbridge, MA 01550
 USA
 Phone: +1 (508) 765-9744
 Fax: +1 (508) 765-1299
 lightingimaging@us.schott.com
 www.us.schott.com/lightingimaging

SCHOTT
 glass made of ideas