

Single and Dual Backlights

Patented SCHOTT Backlights are calibrated to provide bright, even illumination for Microscopy and Machine Vision applications.



8" x 8" Backlight, A08927



Dual 2" x 2" Backlight, A08922



IR Filter A08921

Product and Performance Characteristics

- Calibrated with DDL-bulb from ± 13 to ± 15 gray scale levels at a mean of 200, gamma setting of 1.0, using a patented process to create diffuse, uniform illumination within the active area (Uniformity scans are available upon request)
- The white acrylic diffuser plate provides the optimum combination of uniformity and intensity, a protective IR filter is included with every unit
- Backlight housing is made of rugged, black anodized aluminum, the plastic fiber bundle is protected with flexible PVC covered metal tubing
- Compact, low profile housing fits in small spaces
- Can be used to create a crisp edge definition, or soft, diffuse incident light
- Dual and quad backlights increase lighting versatility, additional combinations and sizes can be custom ordered
- Intended for use with strobes and ColdVision Series light sources; other sources, particularly those without an IR filter, may damage the plastic fibers
- ColdVision dichroic color filters can be used on the products in conjunction with the A08931 backlight color filter adapter (see photo)

Backlights Single Configuration

Part No.	Active Area	Housing Dimensions	Gray Scales	Common Bundle Length
A08920	2" x 2" (51 x 51)	4" x 2.6" x .59" (102 x 66 x 14.9)	± 13	40" (1016)
A08923	3" x 3" (76 x 76)	6" x 3.5" x .75" (152 x 89 x 16)	± 13	40" (1016)
A08925	4" x 4.88" (102 x 124)	9" x 5" x .78" (229 x 127 x 19.7)	± 13	40" (1016)
A08927	8" x 8" (203 x 203)	12" x 9" x 1" (305 x 229 x 25.4)	± 15	40" (1016)

Backlights Dual Configuration

Part No.	Active Area	Housing Dimensions	Gray Scales	Common Bundle Length
A08922	2" x 2" (51 x 51)	4" x 2.6" x .59" (102 x 66 x 14.9)	± 13	42" (1067)
A08926	4" X 4.88" (102 X 124)	9" X 5" X .78" (229 X 127 X 19.7)	± 13	37" (940)

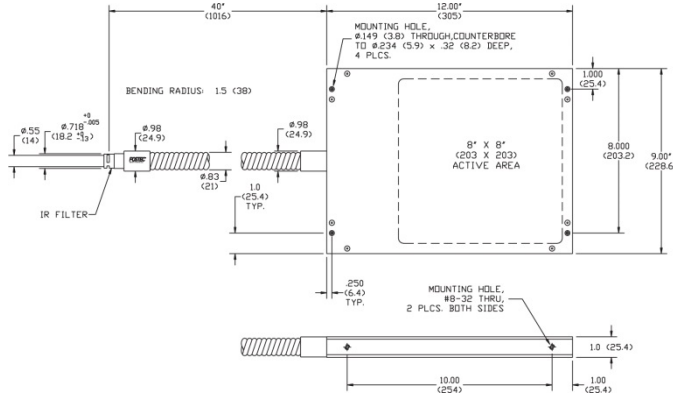


Specifications

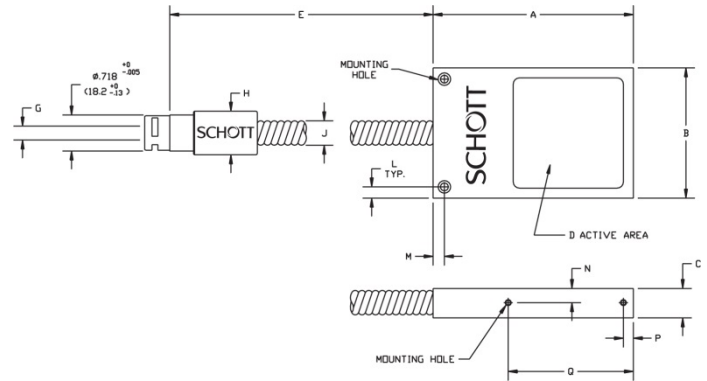
Dimensions in () are in mm

Input: Black Anodized Aluminium
 Body: Black Anodized Aluminium
 Sheathing: PVC Covered Metal Tubing

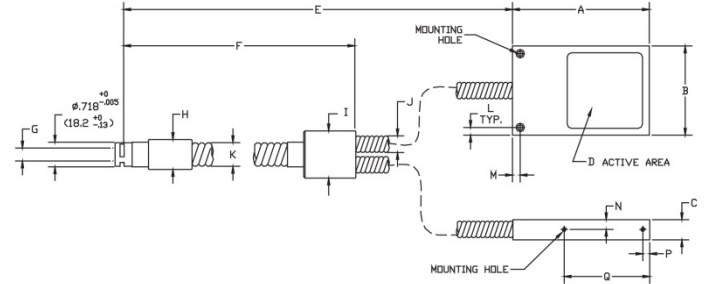
8" x 8" Backlight, A08927



Single Backlights A08920, A08923, A08925



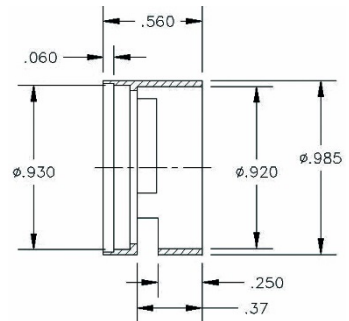
Dual Backlights, A08922, A08924 & A08926



Matrix for Single and Dual Backlights

Part No.	Housing Dimensions LX W X H	Active Area	Overall Bundle Length
Ref. Letter	A, B, C	D	E
A08920	4" x 2.6" x .59" (102x66x14.9)	2" x 2" (51x51)	40" (1016)
A08922	4" x 2.6" x .59" (102x66x14.9)	2" x 2" (51x51)	42" (1067)
A08923	6" x 3.5" x .75" (152x89x19.1)	3" x 3" (76x76)	40" (1016)
A08924	6" x 3.5" x .75" (152x89x15.9)	3" x 3" (76x76)	40" (1016)
A08925	9" x 5" x .78" (229x127x19.7)	4" x 4.88" (102x124)	37" (940)
A08926	9" x 5" x .78" (229x127x19.8)	4" x 4.88" (102x124)	37" (940)

IR Filter A08921



Warning: The IR filter on the input protects the fibers from damage caused by IR absorption.

Matrix for Single and Dual Backlights (Continuation)

Part No.	Common Bundle Length	Active Input Dia.	Ferrule Dia.	Coupler Dia.	Tubing Dia.	Top Mounting Hole Location	Top Mounting Hole Dimensions	Side Mounting Hole Location	Side Mounting Hole Dimensions	Bend Radius
Ref. Letter	F	G	H	I	JK	L/M	THRU/DIA/ C'BORE DIA/DEPTH	N/P/Q	THREAD/DEPTH	
A08920	N/A	.28" (7.0)	.87" (22.1)	N/A	.47" (12)	.225"/.225" (5.72/5.72)	.156"/.25"/.150" (4.0/6.4/3.8)	28"/.20"/2.50" (7.2/5.1/63.5)	#4-40 UNC 2A/.38 (9.6)	.6" (15)
A08922	10" (254)	.39" (9.9)	.87" (22.1)	1.38" (34.9)	.47"/.67" (12/17)	.225"/.225" (5.72/5.72)	.156"/.25"/.150" (4.0/6.4/3.8)	.28"/.20"/2.50" (7.16/5.1/63.5)	#4-40 UNC 2A/.38 (9.6)	.6"/1.2" (15)/(30)
A08923	N/A	.32" (8.1)	.87" (22.1)	N/A	.60" (15)	.187"/.187" (4.75/4.75)	.177"/.28"/.165" 4.5/7.1/4.2	.32"/100"/5.00" (8.1/25.4/127)	#6-32/.25" (6.4)	1" (25)
A08925	N/A	.39" (9.9)	.87" (22.1)	N/A	.68" (17.3)	.425"/.425" (10.80/10.80)	.250"/.50"/.300" (6.4/12.7/7.6)	.36"/.20"/5.75" (9.1/5.08/151)	#6-32 UNC 2A/.38 (9.6)	1" (25)
A08926	10" (254)	.55" (13.8)	.98" (24.9)	1.50" (38.1)	.68"/.83" (17/21)	.425"/.425" (10.80/10.80)	.250"/.50"/5.00" (6.4/12.7/7.6)	.36"/.20"/5.75" (9.1/5.08/146)	#6-32 UNC 2A/.38" (9.6)	1/1.5" (25)/(38)

All specifications are subject to change without prior notice. This datasheet or any extracts thereof may only be used in other publications with express permission of SCHOTT. © SCHOTT North America, Inc.

Lighting and Imaging
SCHOTT North America, Inc.
 122 Charlton Street
 Southbridge, MA 01550
 USA

Phone: +1 (508) 765-9744
 Fax: +1 (508) 765-1299
 lightingimaging@us.schott.com
 www.us.schott.com/lightingimaging

SCHOTT
 glass made of ideas