

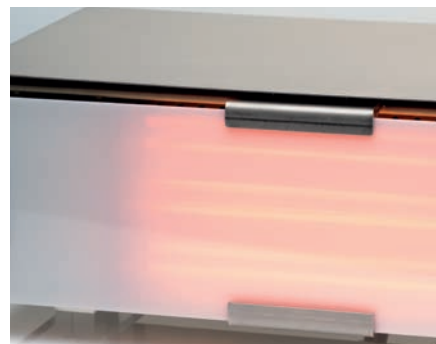
# SCHOTT NEXTREMA® 724-5 – translucent white

Maximum heating performance and glare reduction

NEXTREMA® 724-5 combines a white design with superior infrared transmission characteristics. It is the ideal material for applications requiring maximum heating performance, protection of the heating elements and an elegant design.

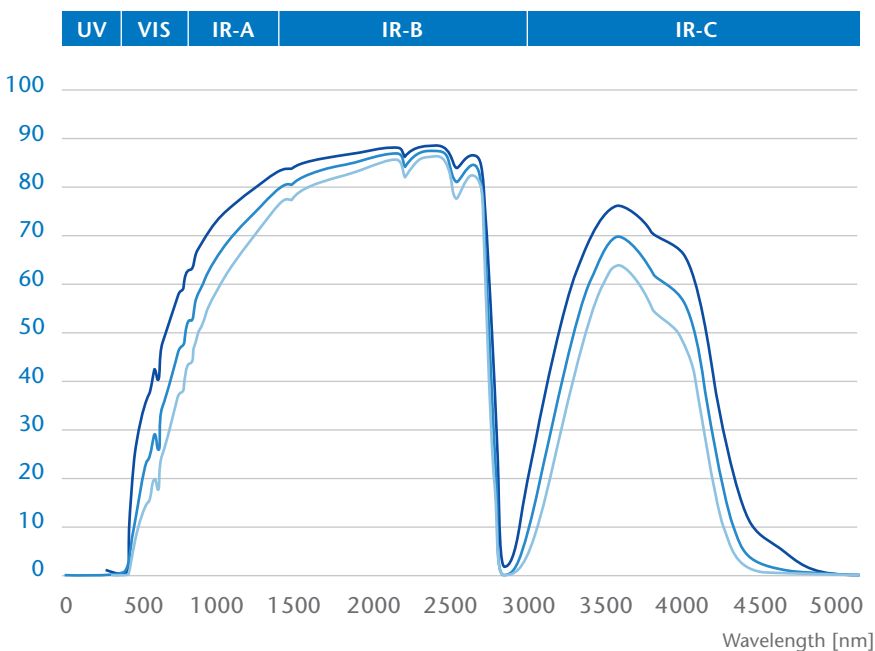
## Material benefits

- High overall transmission from the IR-A to IR-C range
- Translucent design filters bright glare
- Easy cleaning due to robust, smooth surface



## Overlay of NEXTREMA® transmission with heating element emission spectra

### Transmission [%]



### NEXTREMA® transmission curves

- NEXTREMA® 724-5  
Thickness: approx. 2 mm
- NEXTREMA® 724-5  
Thickness: approx. 3 mm
- NEXTREMA® 724-5  
Thickness: approx. 4 mm

\*Transmission graphs are based on data from individual measurements. Deviations may result from manufacturing process.

Material data sheets are available for download at:  
[www.schott.com/nextrema](http://www.schott.com/nextrema)

**SCHOTT**  
glass made of ideas

# SCHOTT NEXTREMA® 724-5 – translucent white

Appearance in combination with different heating elements

## Short wave emitter

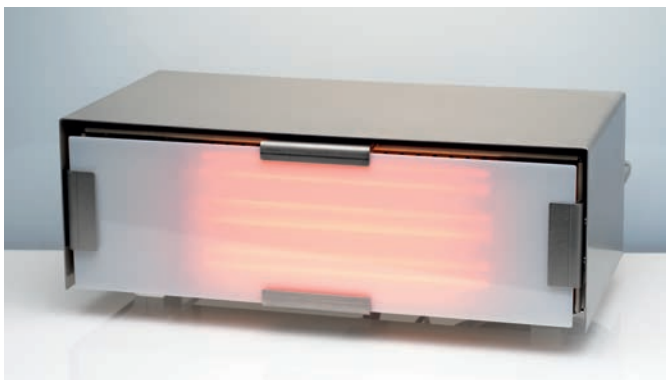


Short wave emitter & 724-5 – day view

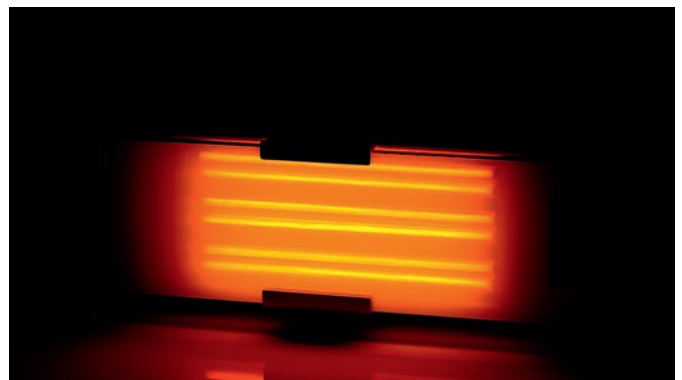


Short wave emitter & 724-5 – night view

## Carbon emitter



Carbon emitter & 724-5 – day view

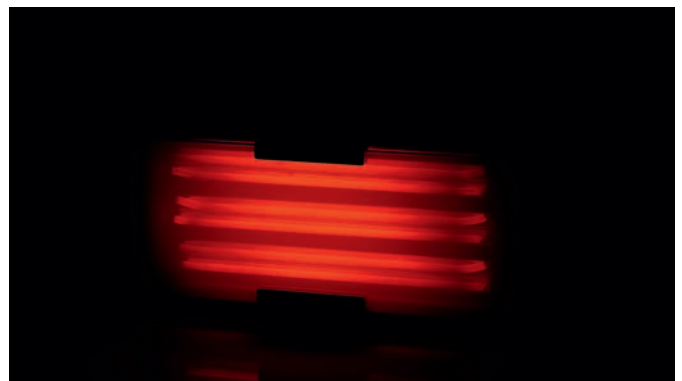


Carbon emitter & 724-5 – night view

## Medium wave emitter



Medium wave emitter & 724-5 – day view



Medium wave emitter & 724-5 – night view



80260 ENGLISH/ROW 03160.4 all/nino Printed in Germany

Home Tech  
SCHOTT North America, Inc  
5530 Shepherdsville Road  
Louisville, KY 40228  
USA  
Phone (502)657-4417  
Fax (502)966-4976  
info.nextrema@us.schott.com

[www.us.schott.com/nextrema](http://www.us.schott.com/nextrema)

**SCHOTT**  
glass made of ideas